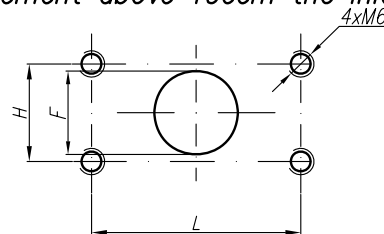


At pump displacement above 10ccm the Inlet port is rotated:



Type	Displacement cm ³ /rev	Flow		Pressure P _{nom} bar	max Speed n rpm	Dimension							
		at 1500 rpm l/min	at max rpm l/min			A mm	B mm	Inlet			Outlet		
								H	L	F	H	L	F
20A(C)4,5X634	4,5	6,14	14,33	250	3500	42,5	80						
20A(C)6,3X634	6,3	8,69	20,29	250	3500	44	83	38,1	17,4	15			
20A(C)8,2X634	8,2	11,32	26,40	250	3500	45,5	86						
20A(C)10X634	10	13,95	32,55	250	3500	47	89						
20A(C)11X634	11,3	15,76	36,78	250	3500	48	91,1						
20A(C)12X634	12	16,92	39,48	250	3500	48,6	92,3						
20A(C)14X634	14	19,95	46,55	250	3500	50	95,4						
20A(C)15X634	15	21,60	36,00	250	2500	51	96,9	22,2			38,1	17,4	15
20A(C)16X634	16	23,04	38,40	250	2500	52	98,6						
20A(C)19X634	19	27,36	45,60	200	2500	54	103,5						
20A(C)22X634	22	31,68	42,24	180	2000	57	108,5						
20A(C)25X634	25	36,00	48,00	160	2000	59,2	113,4			25			